

ZOOMLION

ZTC600V532-1R

TRUCK CRANE



4.0
PRODUCTS

ZTC600V532-1R

TRUCK CRANE

Max. load moment of
basic boom

2009 kN.m

Max. load moment of
max. length boom

1305 kN.m










Max. lifting height of jib

61 m

CRANE AND COMPONENT WEIGHTS

Axle	1	2	3	4	Total weight
T	7.8	7.8	13	13	41.6(without 3.5t auxiliary counterweight)

Working Speed

	 km/h		
1,2 axle: 315/80R22.5-20PR 3,4 axle: 12R22.5-18PR	80km/h max	50%	Forward speeds: 12.57 / 7.47 / 5.28 / 3.82 / 2.79 / 1.95 / 1.38 / 1 / 0.73, Reverse speeds:13.14
Drive	Operation Speed	Rope diameter/ length	Max. single line pull
	140m/min	φ 17.0 mm/230 m	5000kg
	140m/min	φ 17.0 mm/140 m	5000kg
	0-2 r/min		
	45s/100s		
	100s/115s		

Hook Detailed Description

Specification	No.of Sheaves	No.of Lines	Weight (t)	Remark
60t	6	12	510	Standard
4.5t	0	1	140	Standard

SPECIFICATIONS

Crane Superstructure

Main boom

The box-shaped boom consists of 5 U-type boom sections made of low-alloy high-strength steel plate. Main boom length: 11.8m-46m.

Jib

2 section lattice jibs(9.2m,14.6m), offset: 5°,25°,45°

Slewing platform

Plate structured and optimized slewing platform makes the layout of articulated points of boom and derricking mechanism more reasonable. The hood is designed in a ergonomic way.

Rooster sheave

It is secured at the outside of the boom head when it is not used. It can be rotated around the shaft and pinned onto the boom head when it is used. This option is set up for rapid hoists over the boom head to improve the working efficiency when the loads are light.

Derricking mechanism

1 front-mounted hydraulic cylinder with balance valve provides the boom with smooth derricking movements from -2° to 80°.

Slewing mechanism

Via the planetary gear reducer, the hydraulic motor drives the pinion gear on the output shaft to rotate the toothed ring of slewing bearing fixed on chassis frame, providing superstructure with 360° unlimited slewing.

Hoist mechanism

Main hoist mechanism and auxiliary hoist mechanism can be controlled independently and also can carry out simultaneous movements.

Operator's cab

It is equipped with windshield wiper, washing system, and air conditioner for cooling.

Outriggers

H-type outriggers, which are in box-shaped structure and welded of low-alloy and high-strength steel plate. The 5th outrigger is installed beneath the driver's cab. The crane can realize full range slewing operation with the 5th outrigger set up.

Hydraulic system

The open-type hydraulic system adopts advanced pilot-operated proportional joysticks and hydraulic proportional control system.

Hydraulic tank

700L

Electrical system

Two-wire system, 24 Volt DC.

Safety devices

Automatic load moment limiter, warning light, hoisting limit switch, relief valve, hook latch, etc.

Counterweight

The counterweight consists of one 6.5 t fixed counterweight plate and 3.5t auxiliary counterweight plate.

Crane chassis

Engine:

YCK10360-30, Rated power: 265/1900KW/r/min, max. output torque: 1600 (1100-1450) N.m/r/min. Euro III standard emissions.

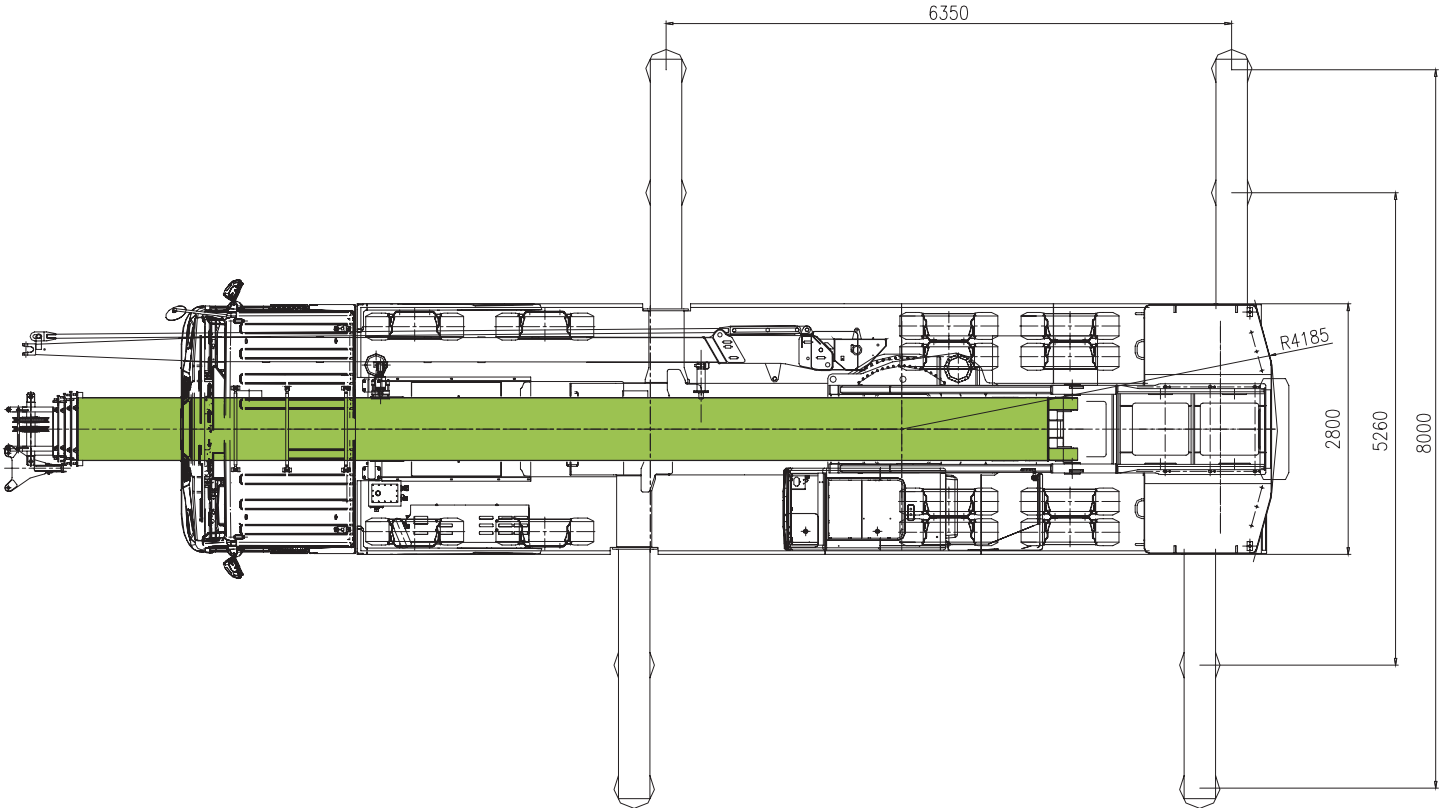
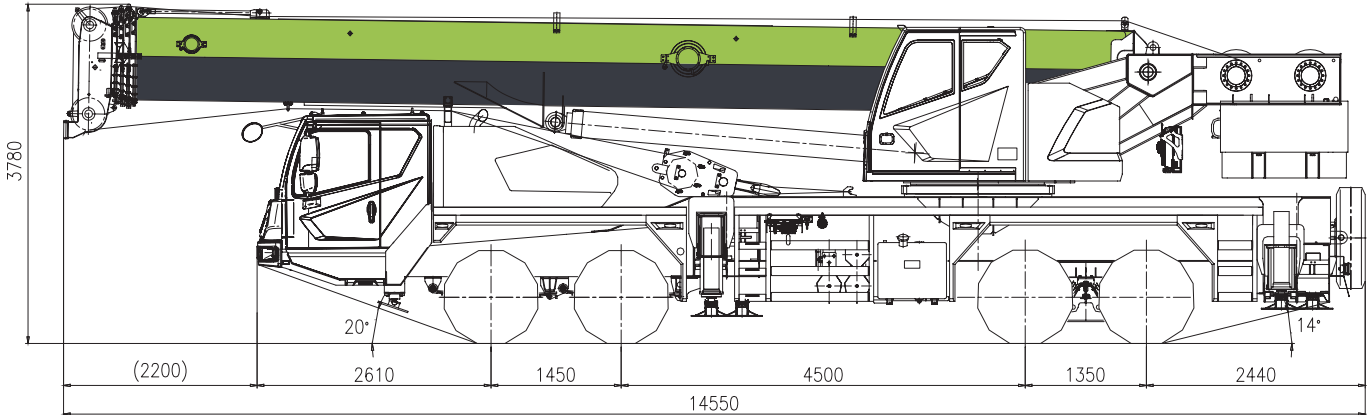
Fuel tank:

300L

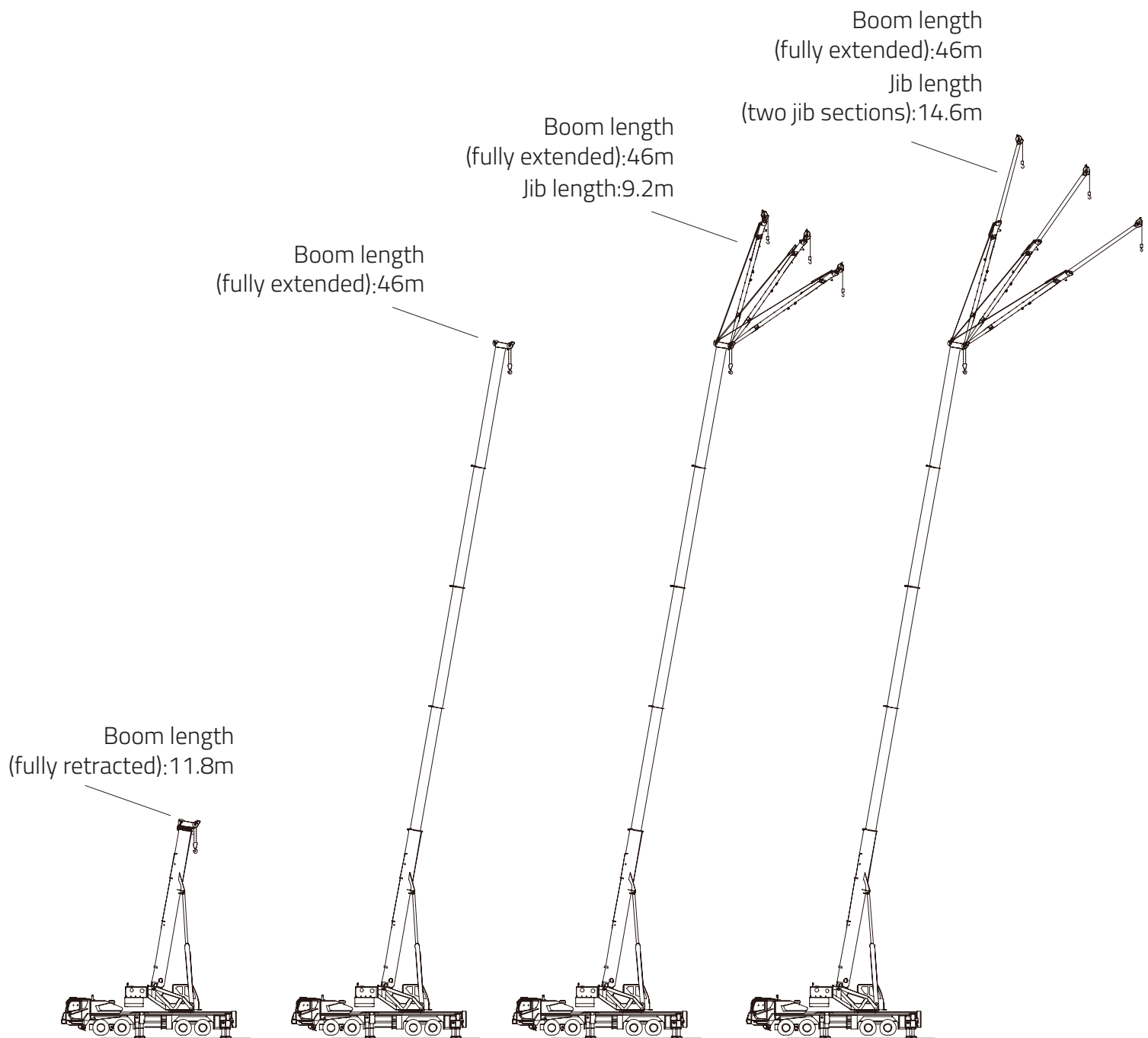
TECHNICAL DATA

	Item	Unit	Value	Remarks
 <p>Working performance</p>	Max. rated lifting capacity	kg	60000	
	Max. load moment of basic boom	kN.m	2009	
	Max. load moment of Max. length boom	kN.m	1305	
	Max. lifting height of basic boom	m	13.1	
	Max. lifting height of boom	m	46.7	These parameters do not include deflection of boom and jib.
	Max. lifting height of jib	m	61	
 <p>Working speeds</p>	Max. hoist rope speed (Main winch)	m/min	140	At 4th layer
	Max. hoist rope speed (Auxiliary winch)	m/min	140	At 4th layer
	Boom derricking up time	s	45	
	Boom telescoping out time	s	100	
	Slewing speed	r/min	0-2.0	
 <p>Driving</p>	Max. working altitude	m	2000	
	Max. driving speed	km/h	80	
	Max. gradeability	%	50	
	Min. turning diameter	m	≤24	
	Min. ground clearance	mm	272	
	Oil consumption per hundred kilometer	L	41	
 <p>Weight</p>	Deadweight in driving condition	kg	41600	Excluding 3.5t auxiliary counterweight
	Complete vehicle kerb mass	kg	41470	
	Front axle load	kg	15600	
	Rear axle load	kg	26000	
 <p>Dimensions</p>	Overall dimensions (L×W×H)	mm	14550×2800×3780	
	Outrigger spread (W)	m	6.35	
	Outrigger spread (L)	m	8.0	
	Outrigger spread (L) (Intermediately extended)	m	5.26	
	Tail slewing radius	mm	4185	
	Boom length	m	11.8-46	
	Boom angle	°	-2 - 80	
	Jib length	m	9.2, 14.6	
Jib angle	°	5, 25, 45		

DIMENSIONS

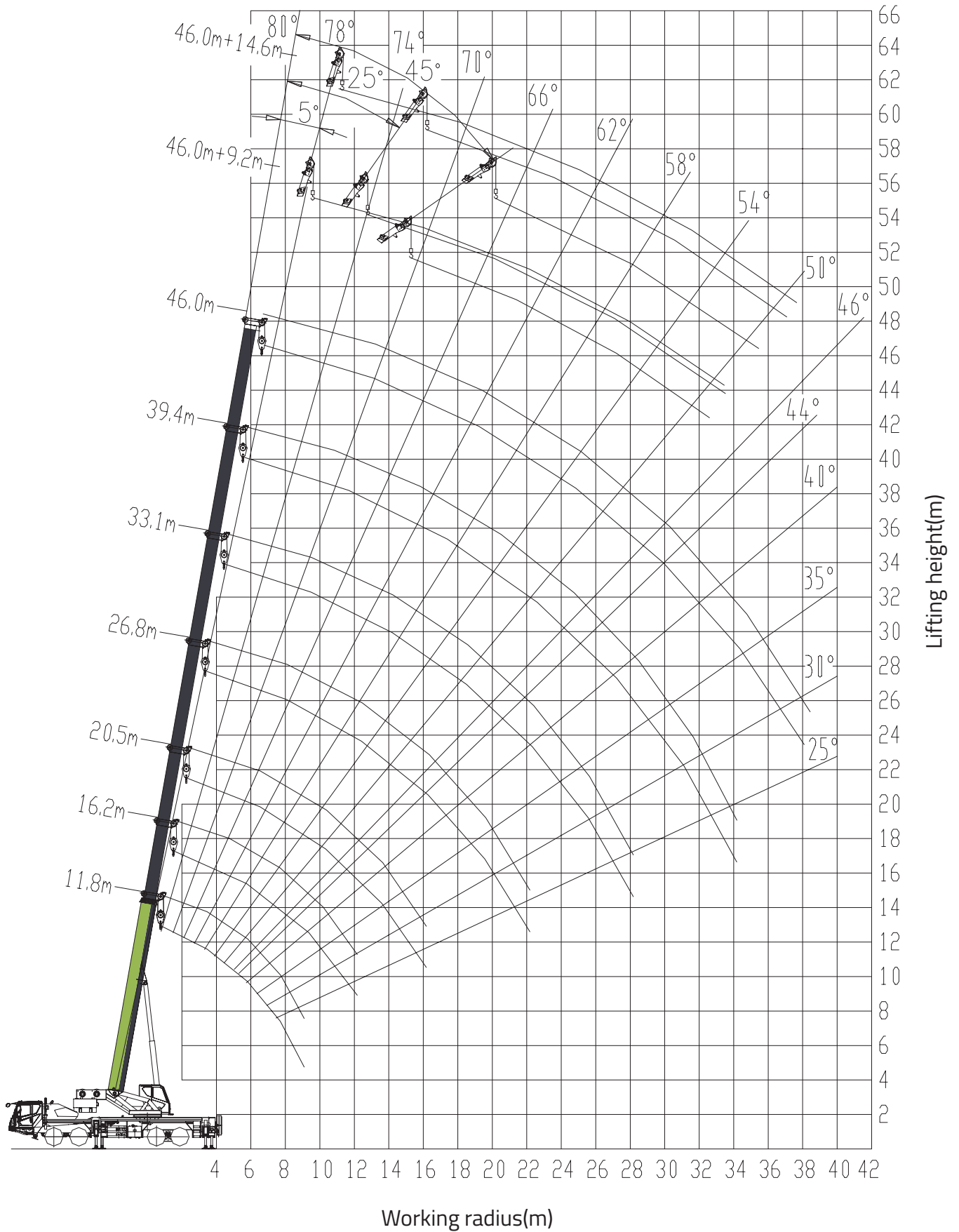


BOOM/JIB COMBINATION



Working Condition	Boom/Jib Length	Note
Boom	11.8-46m	
Boom+Jib section 1	Boom 46m+(Jib section 1) 9.2m	
Boom+Jib section 1 + jib section 2	Boom 46m+(Jib section 1 + jib section 2) 14.6m	

LIFTING HEIGHT CURVE



RATED CAPACITY CHART

Outriggers fully extended

10t counterweight

Over side and rear working area

Working radius(m)	Boom length (m)															
	Telescopic cylinder I fully extended							Telescopic cylinder I intermediately extended				Telescopic cylinder I fully retracted				
	11.8	16.2	20.5	26.8	33.1	39.4	46	22.5	28.8	35.1	41.7	18.1	24.4	30.7	37.3	
3	60.0	46.0										26.0				
3.5	55.0	46.0	34.0									26.0				
4	48.0	44.0	34.0					26.0				26.0	25.0			
4.5	44.0	42.5	34.0	26.0				26.0				26.0	25.0			
5	41.0	40.5	34.0	26.0				26.0	25.0			26.0	25.0			
5.5	37.0	36.4	33.0	26.0				26.0	25.0			26.0	24.5	17.0		
6	33.5	33.0	32.0	26.0	21.2			26.0	25.0			26.0	24.0	17.0		
7	28.0	27.5	27.2	25.5	21.2			25.0	25.0	16.0		25.0	22.5	16.0	11.6	
8	24.0	23.7	23.5	23.5	20.2	15.5		23.5	23.0	15.5	11.6	24.0	21.2	14.6	11.6	
9	21.0	20.5	20.3	21.0	18.5	15.0		21.0	21.0	14.5	11.6	21.2	19.8	13.6	11.6	
10		18.5	18.2	18.5	17.0	14.2	10.5	19.0	19.0	14.0	11.2	19.0	18.0	12.5	10.8	
11		15.5	15.2	16.0	15.6	13.3	10.3	17.0	17.5	13.0	10.6	17.5	17.0	11.6	10.0	
12		13.3	13.0	14.2	14.6	12.5	10.2	14.5	15.0	12.0	10.0	15.0	15.7	10.7	9.40	
13		11.0	11.0	12.0	12.8	11.6	9.70	12.5	13.1	11.3	9.50	13.2	13.7	10.0	8.80	
14			9.60	10.6	11.3	11.0	9.10	10.8	11.5	10.8	8.60	11.6	12.0	9.50	8.20	
15			8.30	9.40	10.0	10.3	8.60	9.50	10.2	10.0	8.30		10.8	9.00	7.70	
16			7.20	8.20	8.90	9.40	8.10	8.50	9.20	9.50	7.80		9.70	8.40	7.20	
18				6.40	7.10	7.60	7.40	6.70	7.40	7.80	7.00		7.80	7.50	6.30	
20				5.10	5.75	6.20	6.50		6.00	6.40	6.30		6.50	6.80	5.70	
22				4.00	4.65	5.10	5.45		4.90	5.30	5.50			5.80	5.20	
24					3.80	4.20	4.50		4.00	4.40	4.70			4.80	4.70	
26					3.05	3.50	3.80			3.70	4.00			4.20	4.30	
28					2.45	2.85	3.20			3.10	3.40				3.80	
30						2.35	2.65			2.60	2.80				3.30	
32						1.90	2.20				2.40				2.80	
34						1.50	1.80				2.00					
36							1.40				1.70					
38							1.15				1.40					
I(m)	0	4.4	8.7	8.7	8.7	8.7	8.7	4.4	4.4	4.4	4.4	0	0	0	0	
II(m)	0	0	0	6.3	12.6	18.9	25.5	6.3	12.6	18.9	25.5	6.3	12.6	18.9	25.5	
Reeving	12	10	8	6	5	4	3	6	5	4	3	6	5	4	3	
Hook	60t															

Unit: ton

This crane is provided with various rated capacity charts. The operator should select proper rated lifting load referring to resp. lifting capacity tables according to actual working conditions. For details, please refer to the tables below.

The values in column "I" refer to the extendable length of telescopic cylinder I.

The values in column "II" refer to 3 times extendable length of telescopic cylinder II, namely, the total extendable length of boom section 3, 4 and 5.

RATED CAPACITY CHART

 Outriggers fully extended
 10t counterweight
 Over side and rear working area

Boom angle(°)	boom+jib					
	Boom(46m)+Jib(9.2m)			Boom(46m)+Jib(14.6m)		
	5°	25°	45°	5°	25°	45°
80	4.50	2.50	1.40	3.00	1.40	1.10
78	4.50	2.50	1.40	2.80	1.35	1.10
76	4.40	2.50	1.40	2.50	1.30	1.10
74	4.20	2.30	1.35	2.30	1.25	1.05
72	3.80	2.10	1.35	2.10	1.20	1.05
70	3.50	2.00	1.30	1.90	1.20	1.05
68	3.20	1.90	1.30	1.80	1.15	1.00
66	3.00	1.80	1.25	1.70	1.15	1.00
64	2.80	1.70	1.25	1.60	1.10	1.00
62	2.50	1.60	1.20	1.50	1.10	0.95
60	2.20	1.50	1.20	1.40	1.05	0.95
58	2.00	1.40	1.15	1.30	1.05	0.95
56	1.70	1.30	1.10	1.20	1.00	0.90
54	1.50	1.20	1.05	1.10	1.00	0.90
52	1.20	1.10	1.00	1.05	0.95	0.75
50	1.00	0.95	0.90	0.90	0.80	0.70
Reeving	1					
Hook	4.5t					

Unit: ton

ZOOMLION

Zoomlion Heavy Industry Science & Technology Co.,Ltd.

Add: No.677, Lugu Road, Zoomlion Industrial Park, Changsha, Hunan, China, 410205

Copyright©2024 Zoomlion. All rights reserved. Reproduction and copying of any part of contents is not allowed for any purposes without Zoomlion's approval.



Product specifications are subject to change without notice and obligation. The photographs and/or drawing in this document are for illustrative purposes only. Please consult your local ZOOMLION dealer for more information.

website:en.zoomlion.com