

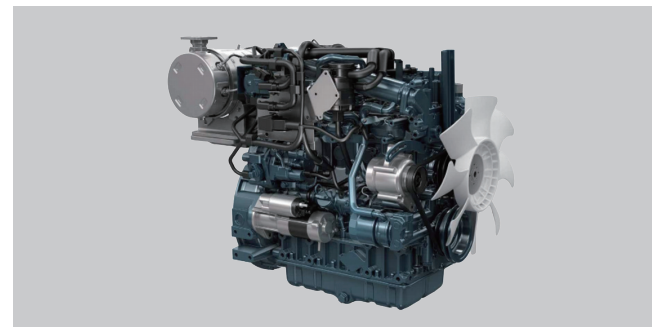
ZOOMLION

# SD35

## ROUGH TERRAIN FORKLIFT



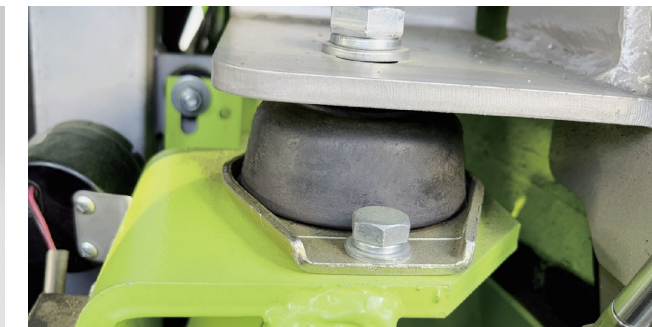
## Internal Combustion Counterbalanced Rough Terrain Forklift



A Kubota Euro V V2403-CR-T-EW04 engine is installed, with strong power and peak torque of 1956 N.m. The low-speed and high-torque engine can provide strong acceleration. When the off-road vehicle is driving on uneven roads, the engine can output sufficient power to get the vehicle out of trouble.



This truck is designed with a wide-view gantry to provide excellent visibility, so the driver can obtain wider vision during operation, which improves the operation efficiency and safety of the forklift truck.



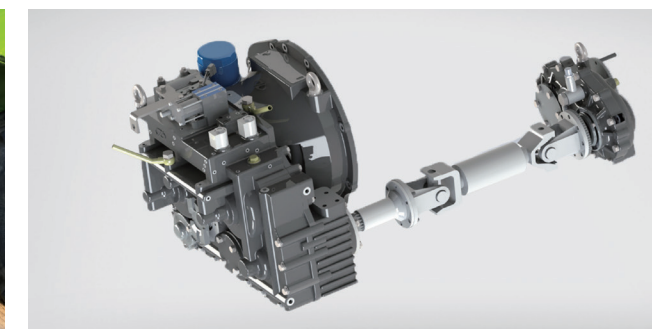
In terms of ergonomics, the suspension system design is adopted, that is, the connection between the roof protection frame and the body is realized by rubber dampers instead of the traditional rigid design, which greatly reduces the vibration of the machine and provides a smoother driving on rough terrain. It also reduces the operator fatigue.



The truck can be equipped with an optional OPS system to sense the working status of the operator.



The truck has good trafficability, and its minimum ground clearance is as high as 220 mm, so that the truck can pass through potholes smoothly without worrying about underbody scratching.



The truck is equipped with a new 4WD transmission, with a total of 3 gears, two in the front and one in the rear, and can realize part-time 4WD according to actual use requirements. The tripping mechanism is controlled by the solenoid valve, and the switching between 2WD and 4WD is realized through switch control.

## Machine Parameters

General	Manufacturer	/	ZOOMLION	
	Model	/	SD35	
	Power type	/	Diesel	
	Rated capacity	kg	3500	
	Load centre	mm	500	
Characteristic & Dimension	Self weight	kg	5300	
	Lifting height	mm	3000	
	Free lift	mm	160	
	Fork size (L*W*T)	mm	1070x125x50	
	Fork regulating range (Min./Max.)	mm	240-1200	
	Mast tilt angle (F/R)	Deg	10 / 12	
	Front overhang	mm	605	
	Rear overhang	mm	625	
	Min.ground clearance	mm	210	
	Length to face of fork (without fork)	mm	3115	
	Overall width	mm	1690	
	Mast lowered height	mm	2295	
	Mast extended height (with backrest)	mm	4200	
	Overhead guard height	mm	2280	
	Turning radius	mm	3530	
Performance	Min.right angle stacking aisle width(a12=1000,b12=1200)	mm	5200	
	Min.right angle stacking aisle width(a12=1200,b12=800)	mm	5050	
	Travel (Laden/Unladen)	km/h	18/20	
	Lifting(Laden)	mm/s	420	
	Lowering(Laden)	mm/s	440	
	Max.Drawbar pull (Laden)	KN	35	
	Max.Gradeability (Laden)	%	20	
	Tyre	Tyre (Front)	/	14-17.5L-14PR
		Tyre (Rear)	/	10.0/75-15.3
		Tread (Front/Rear)	mm	1250 / 1270
Power & Transmission	Wheelbase	mm	1885	
	Battery Voltage/Capacity	V/Ah	12/120	
	Engine Model	/	V2403-CR-T-EW04	
	Engine Manufacture	/	kubota	
	Rated output/r.p.m.	Kw	42.6	
	Rated torque/r.p.m.	N.m	195.6 / 1500	
	No.of cylinder	/	4	
	Bore*Stroke	mm	60x1495	
	Displacement	L	2.434	
	Fuel tank capacity	L	70	
	Transmission Manufacture	/	ZOOMLION	
	Transmission Type	/	Electrohydraulic	
Operating pressure	Mpa	17.5		

## Wide view 2-stage mast

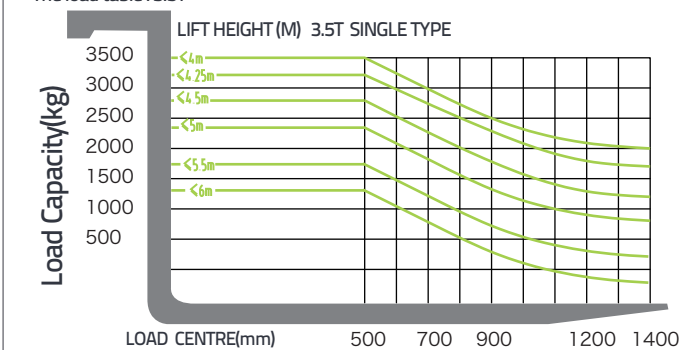
Model	Max.fork height	Mast retraction height	Free lift (Without backrest)	Mast extended height (with backrest)	Capacity at max.height	Masttilt Angle f/r
	mm	3.5T mm	3.5T mm	3.5T mm	3.5T kg	3.5T °
M300	3000	2295	160	4200	3500	10/12
M400	4000	2845	160	5200	3500	10/12

## Full free 3-stage mast

Model	Max.fork height	Mast retraction height	Free lift (Without backrest)	Mast extended height (with backrest)	Capacity at max.height	Masttilt Angle f/r
	mm	3.5T mm	3.5T mm	3.5T mm	3.5T kg	3.5T °
S400	4000	2105	905	5200	3050	10/12
S450	4500	2270	1020	5700	2920	10/12
S480	4800	2370	1120	6000	2570	10/12
S500	5000	2435	1185	6200	2150	6/6
S550	5500	2600	1350	6700	1850	6/6
S600	6000	2820	1570	7200	1400	6/6

## Capacity Chart

The load table : 3.5T



## Machine 2D Graph

