

ZOOMLION

FB50H Electric Forklift



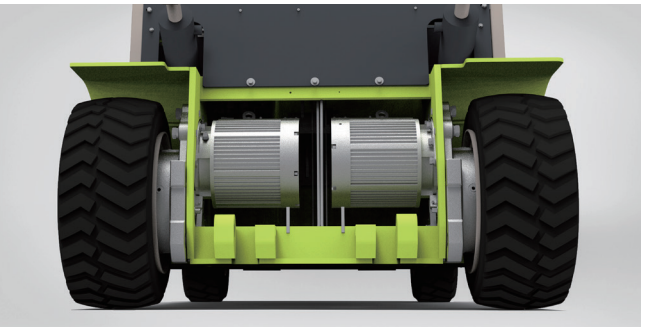
Electric Forklift



The gantry opening is optimized to improve the field of vision by 10% and ensure operation.



The battery is of side-access structure, ensuring quick and efficient replacement. The lithium iron phosphate battery, characterized by no maintenance, zero pollution, fast charging, is used.



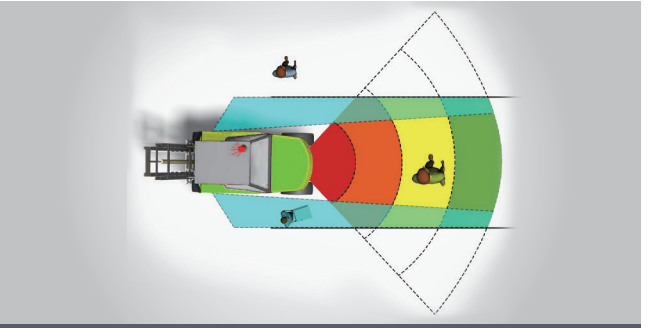
Imported dual motors are adopted to greatly improve the gradeability, driving speed and lifting speed.



The electronic control unit is located on the counterweight, and it is provided with a removable cover plate that takes into account the heat dissipation and maintenance convenience.



Fingertip control greatly simplifies the tedious actions of various operations and has higher efficiency.



The intelligent monitoring system is optional to alarm and warn the personnel entering the designated area from the side and rear of the forklift truck. The driver identification, driving behavior monitoring and other functions are available. Cloud data sharing and real-time vehicle running status inspection are supported.

Machine Parameters

Features		FB50H
Power	—	Battery
Rated Capacity	kg	5000
Center of load	(mm)	500
Lifting height	h3(mm)	3000
Free lifting height	h1(mm)	146
Forks LxWxH	L5xWxT(mm)	50/125/1070
Tilt Forward/Backward	-	6/10
Min.turning radius	Wa(mm)	2580
Min right angle stalking width	Ast(mm)	4353
Min.ground clearance(Mast)	m(mm)	160
Overhead guard height	h6(mm)	2300
Front overhang	x(mm)	553
Rear overhang	(mm)	337
Performance		
Max.traveling speed(loaded)	km/h	13.5
Max.lifting speed(loaded/empty)	mm/s	300/400
Drawbar pull/Gradeability	kN/%	15
Size		
Overall length(without fork)	L2(mm)	2930
Overall width	b1(mm)	1583
Mast lowered height	h1(mm)	2395
Mast extended height	mm	4350
Chassis		
Tire(Front)	—	28 X 12.5-15PR
Tire(Rear)	—	23 X 10-12PR
Wheelbase	L2(mm)	2040
Tread width(Front/Rear)	S/P(mm)	1250/1100
Curb weight(Non-load)	kg	7110
Engine		
Battery(Voltage)	V	80
Battery(Capacity)	Ah	560
Rated power (Walking)	kw	11 x 2
Lift power	kw	25
Working pressure	MPa	17.5

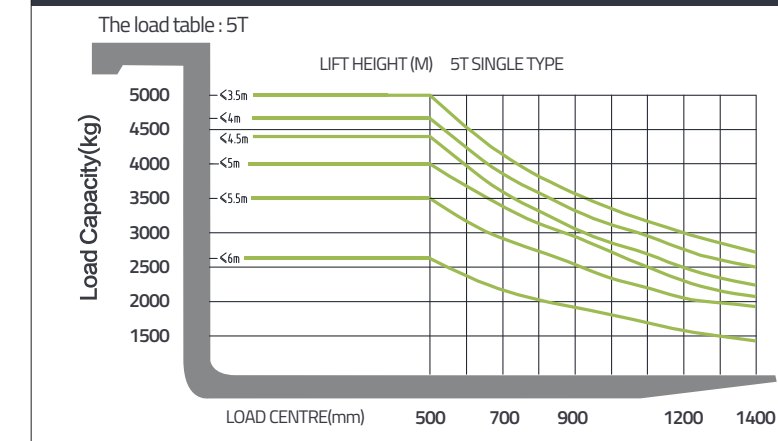
Wide View 2-stage Mast

Model	Max.fork height	Mast retraction height	Free lift height		Capacity at max.height		Masttilt Angle f/r
-	-	-	5T	5T	5T	5T	-
-	-	-	With backrest	Without backrest	With Side shifter	Without Side shifter	-
-	mm	mm	mm	mm	kg	kg	°
M300	3000	2325	146	146	4837	5000	6/10
M350	3500	2575	146	146	4837	5000	6/10
M400	4000	2875	146	146	4445	4600	6/10
M450	4500	3125	146	146	4249	4400	6/6
M500	5000	3375	146	146	3858	4000	6/6
M550	5500	3675	146	146	3369	3500	3/6
M600	6000	3925	146	146	2537	2650	3/6

Full Free 3-stage Mast

Model	Max.fork height	Mast retraction height	Free lift height		Capacity at max.height		Masttilt Angle f/r
-	-	-	5T	5T	5T	5T	-
-	mm	-	With backrest	Without backrest	With Side shifter	Without Side shifter	-
-	mm	mm	mm	mm	kg	kg	°
S400	4000	2230	1055	1710	4347	4500	6/6
S450	4500	2395	1220	1875	4054	4200	6/6
S480	4800	2495	1320	1975	3858	4000	6/6
S500	5000	2560	1350	2005	3662	3800	6/6
S550	5500	2725	1375	2030	-	3000	3/6
S600	6000	2995	1820	2475	-	-	3/6
S700	7000	3380	2205	2860	-	-	3/6

CAPACITY CHART



Machine 2D graph

